



26 Palace Green
Berwick-upon-Tweed, TD15 1HR

Offers Over £149,950

Conveniently located in the centre Berwick-upon-Tweed, this spacious four bedroom maisonette offers a perfect blend of comfort and convenience. The property overlooks Palace Green and is within a short walk onto the historic town walls, shops and facilities.

The accommodation is set on the first and second floors, offering spacious living accommodation that is ideal for families or those seeking extra space for guests or a home office. The interior comprises of a large living room/dining area with a marble fireplace and windows overlooking Palace Green, a well appointed kitchen with grey shaker units with appliances and a cloakroom. On the upper floor are four generous bedrooms and a bathroom. There is full double glazing and gas central heating.

Berwick-Upon-Tweed is renowned for its rich history and stunning coastal scenery, making it a desirable location for both living and leisure.

This property presents an excellent opportunity for those looking to settle in a vibrant community while enjoying the comforts of a well-proportioned home. Whether you are a first-time buyer or seeking a new rental, this maisonette in Palace Green is certainly worth considering. Contact our Berwick-upon-Tweed office to arrange a viewing.



Entrance Hall

9'4 x 5'5 (2.84m x 1.65m)

Stairs to the upper floor, the landing has two large built-in storage cupboards, a central heating radiator and two power points.

Cloakroom

2'9 x 6'1 (0.84m x 1.85m)

Containing a white toilet, a wash hand basin and a frosted window. Central heating radiator.

Kitchen

11'1 x 10'7 (3.38m x 3.23m)

Fitted with a superb range of grey shaker wall and floor units with ample worktop surfaces with a matching splashback. Built-in double oven, four ring ceramic hob with a cooker hood above. Quartz one a half bowl sink and drainer below the double window to the rear, plumbing for an automatic washing machine and space for a fridge and freezer. Central heating radiator and a walk-in recess containing the central heating boiler. Nine power points.

Living Room/Dining Area

14'3 x 21'6 (4.34m x 6.55m)

A large reception room with double doors to the entrance hall, attractive marble fireplace with a coal effect electric fire. A double and single window overlooking Palace Green, two central heating radiators and eight power points.

Second Floor Landing

18'5 x 4'6 (5.61m x 1.37m)

With a built-in shelved storage cupboard and a large walk-in cupboard the landing has access to the loft, two central heating radiators and one power point.

Bathroom

5'8 x 8'3 (1.73m x 2.51m)

Fitted with a white three-piece suite which includes a bath with an electric shower and screen above, a wash hand basin and a toilet. Central heating radiator and a frosted window to the rear.

Bedroom 1

12'2 x 9'5 (3.71m x 2.87m)

A generous double bedroom with a window to the front, a central heating radiator and two power points.

Bedroom 2

10'1 x 8'5 (3.07m x 2.57m)

A double bedroom with a window to the rear with a central heating radiator below. Two power points.

Bedroom 3

7'8 x 9'5 (2.34m x 2.87m)

A single bedroom with a window to the side, a central heating radiator and two power points.

Bedroom 4

9' x 11'8 (2.74m x 3.56m)

A good sized bedroom with a window overlooking Palace Green, a central heating radiator and two power points.

General Information

Full double glazing.

Full gas central heating.

Council tax band B.

Leasehold- 89 years expires 23 Mar 2115.

All mains services are connected.

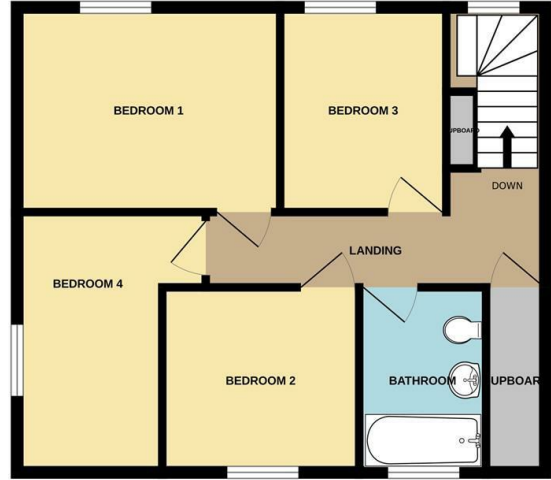
All fitted floor coverings are included in the sale.



GROUND FLOOR



1ST FLOOR



Whilst every attempt has been made to ensure the accuracy of the floorplan contained here, measurements of doors, windows, rooms and any other items are approximate and no responsibility is taken for any error, omission or mis-statement. This plan is for illustrative purposes only and should be used as such by any prospective purchaser. The services, systems and appliances shown have not been tested and no guarantee as to their operability or efficiency can be given.
Made with Metropix ©2025



Important Information You may download, store and use the material for your own personal use and research. You may not republish, retransmit, redistribute or otherwise make the material available to any party or make the same available on any website, online service or bulletin board of your own or of any other party or make the same available in hard copy or in any other media without the website owner's express prior written consent. The website owner's copyright must remain on all reproductions of material taken from this website.

Berwick Office
36 Hide Hill, Berwick-upon-Tweed
Northumberland, TD15 1AB

T: (01289) 307571
F: (01289) 302948
E: berwick@aitchisons.co

Wooler Office
25 High Street, Wooler
Northumberland, NE71 6BU

T: (01668) 281819
F: (01668) 281717
E: wooler@aitchisons.co

